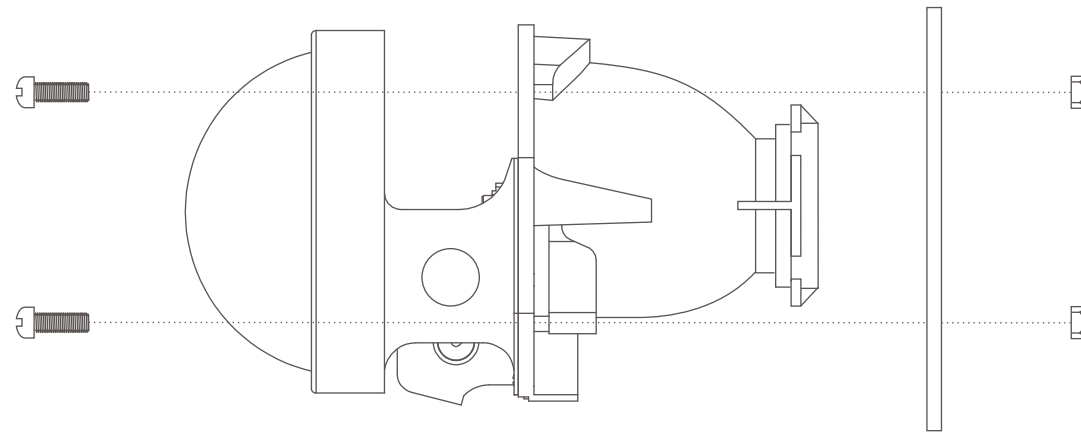




THE AUTOMOTIVE LIGHTING BENCHMARK



INSTALLATION GUIDE

## 2014-2018 SIERRA RETROQUIK KIT



**WARNING:** By reading this document, I agree it is only to be used as an educational guide. Morimoto Lighting makes no guarantee on any finished results, nor are they to be held responsible for any damage, misuse, or personal injuries. Use at your own risk. If you are unable to clearly understand and adapt the information below to your own application, professional installation is recommended.

## TABLE OF CONTENTS

SYSTEM DIAGRAM	P. 3
HARNESS INSTALLATION	P. 4
PROJECTOR INSTALLATION	P. 4
BULB INSTALLATION	P. 5
BALLAST INSTALLATION	P. 5
USING RETRORUBBER SEALANT	P. 6

## STANDARD PARTS

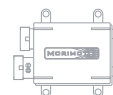


2x G5-X PROJECTORS



2x G5-X PROJECTORS

## OPTIONAL PARTS



2x BALLAST COMPUTERS



2x D2S IGNITERS



2x HID BULBS



1x MOTOCONTROL HARNESS



1x CAPACITOR LINK



2x HIGH BEAM SPLITTERS



1x RETRORUBBER SEALANT

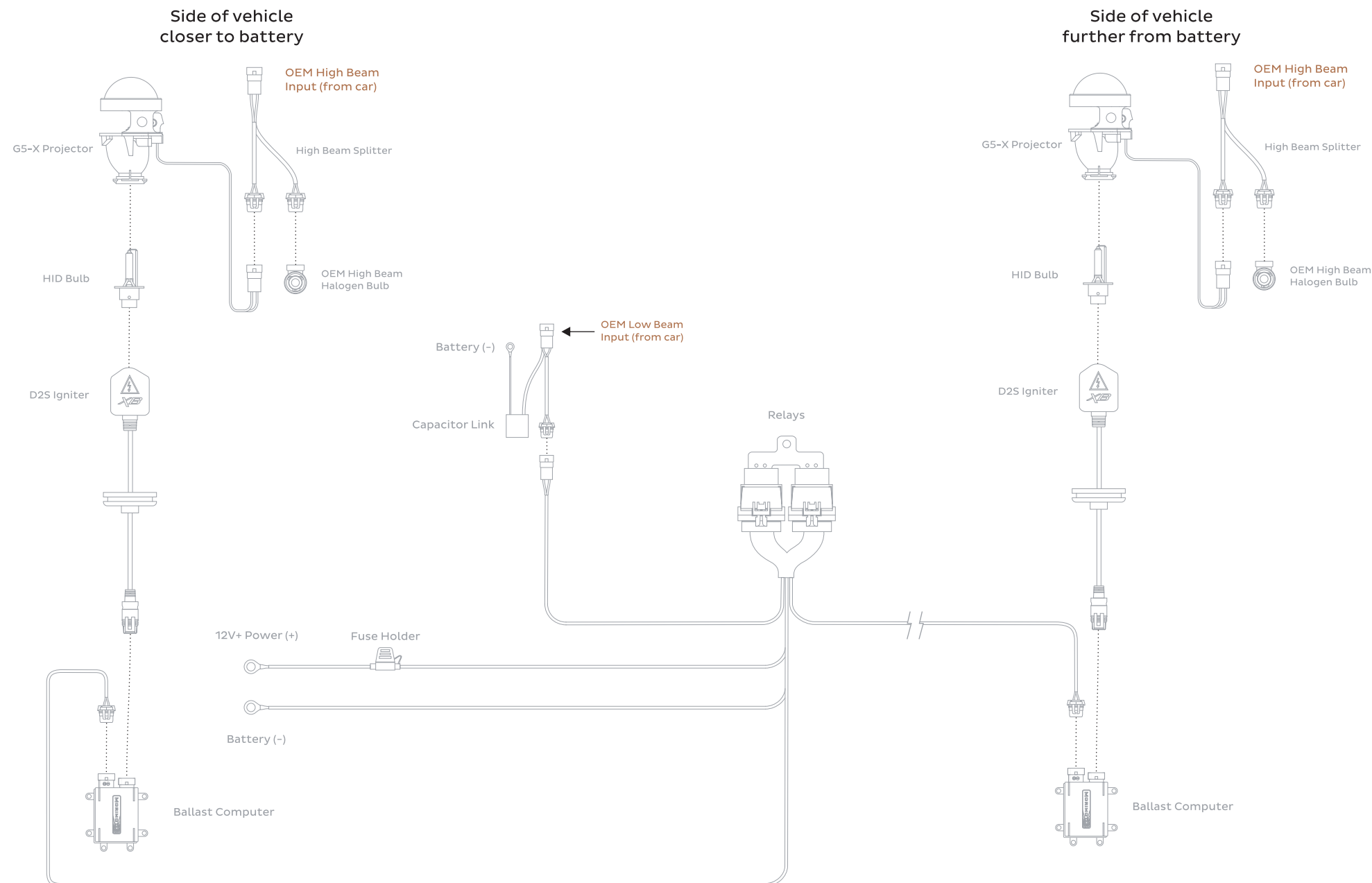
### SPECIAL NOTE:

The included ballast test lead is used for troubleshooting purposes only and is not part of the installation of this system. If necessary, the test lead can be plugged into the ballast input then connected to a 12V+ source to test the ballast. This must be done with the bulb connected to the ballast prior to applying power.



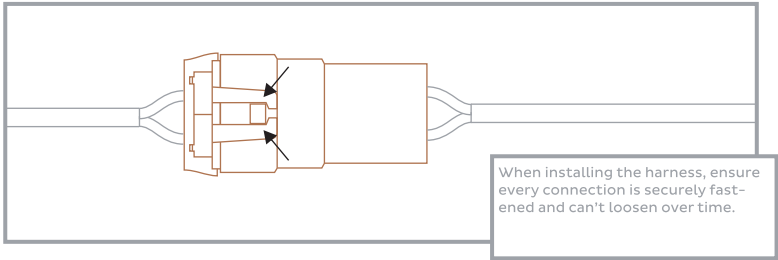
Ballast Test Lead

# SYSTEM DIAGRAM

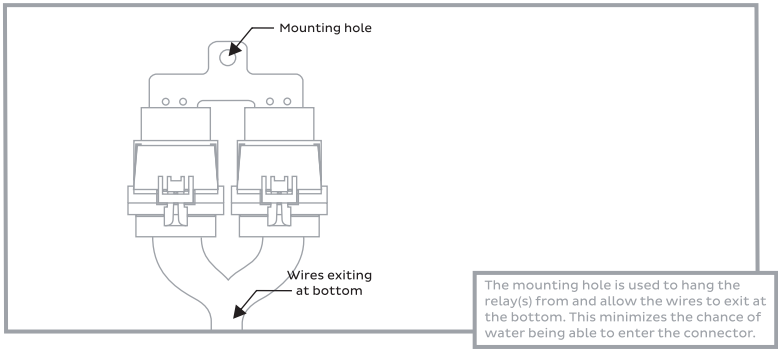


# HARNESS INSTALLATION

## SPECIAL NOTE



## SPECIAL NOTE: HD RELAY HARNESSES

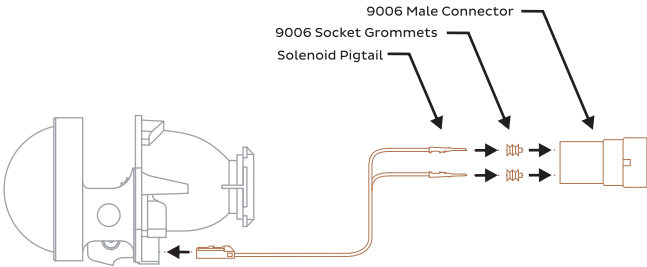


# PROJECTOR INSTALLATION

Once you have opened the stock headlights, unscrew and remove the stock projector from the black bracket as shown below. Once assembled, the new G5-X projector replaces the stock projector using the same screws and the same mounting points without modification.



# SOLENOID WIRING SCHEMATIC



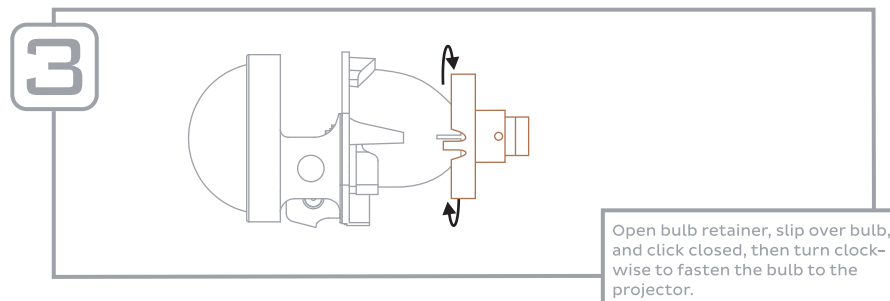
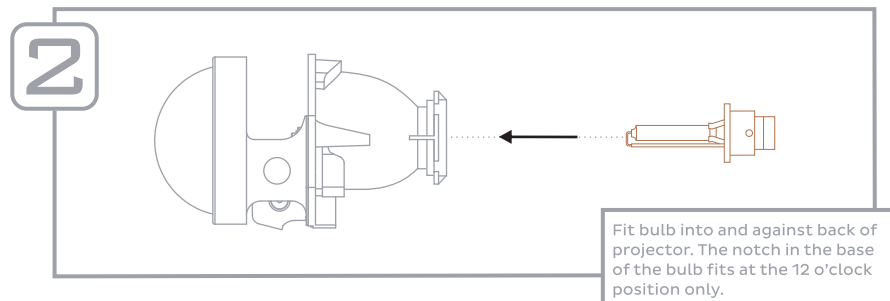
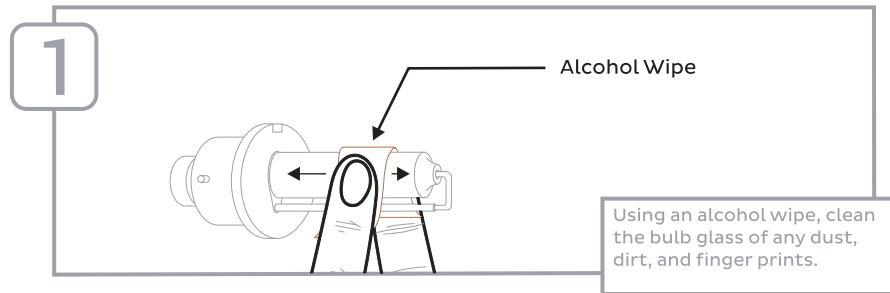
## BULB INSTALLATION



CAUTION: HOT!



HANDLE ONLY WITH  
BLACK PLASTIC BASE



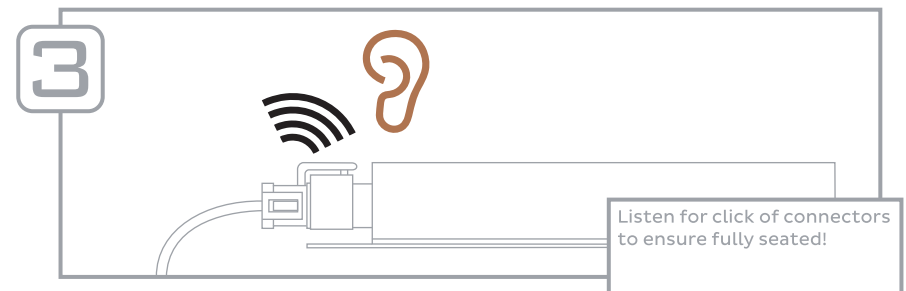
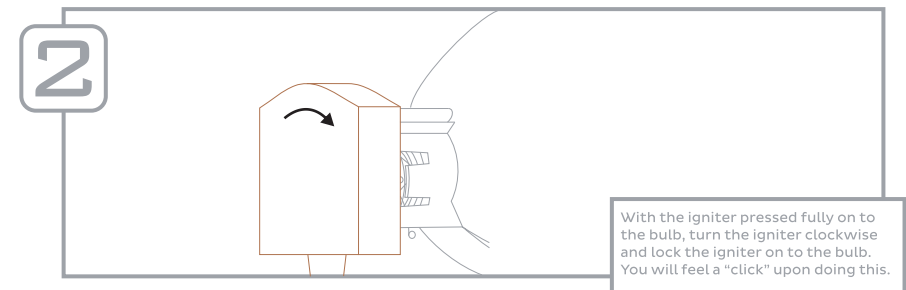
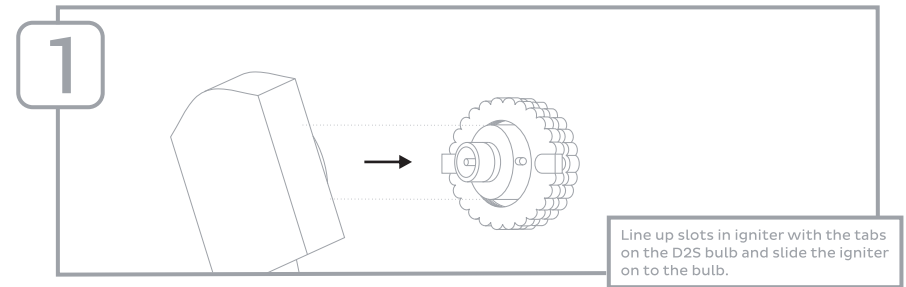
## BALLAST INSTALLATION



DO NOT IGNITE UNTIL  
FULLY CONNECTED!

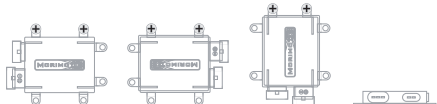


WATERPROOF



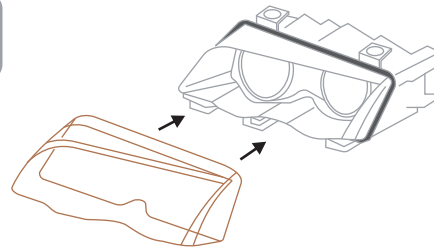
4

Recommended mounting:



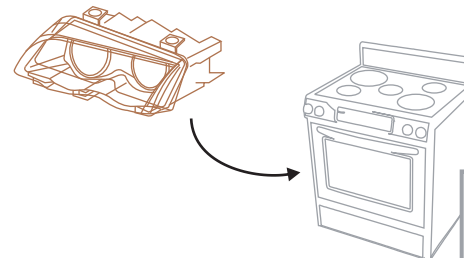
Do not mount ballast with connectors aimed upward!

3



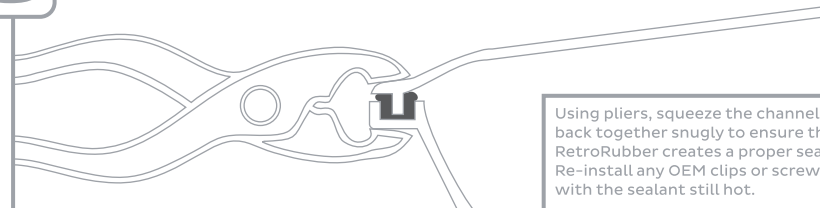
Re-fit headlight lens back over channel in headlight housing and press gently.

4



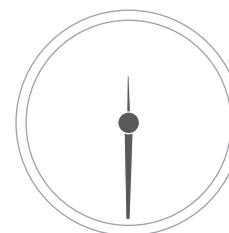
Place entire headlight in oven for seven (7) minutes at 270 Fahrenheit / 130 Celsius to soften the new sealant.

5



Using pliers, squeeze the channel back together snugly to ensure the RetroRubber creates a proper seal. Re-install any OEM clips or screws with the sealant still hot.

6



00:30:00

Allow thirty (30) minutes for headlight to sufficiently cool down prior to re-installation on car.

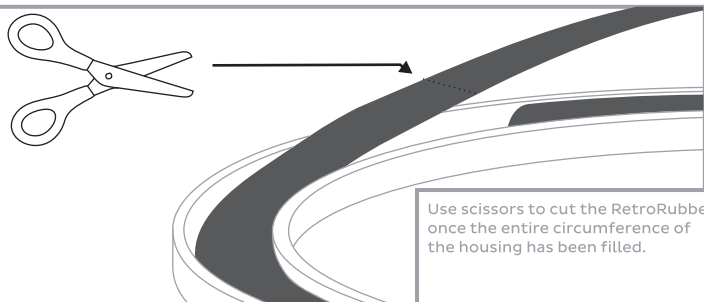
## USING RETRORUBBER SEALANT

1



Place bead of RetroRubber sealant in channel of headlight housing as shown. Fill the majority of the channel to ensure it sufficiently holds the front lens once re-installed.

2



Use scissors to cut the RetroRubber once the entire circumference of the housing has been filled.

-END-